



Appeal of PL13-0150

CRC OIL & GAS PROJECT

**Presentation to the
Ventura County Board of Supervisors
October 20, 2015**





OUR REQUEST

- **Decline to certify the EIR Addendum**
- **Direct the Division to prepare a Subsequent EIR**
- **Direct the Division to perform a compliance review and abate any violations**
- **Uphold our appeal and refund our appeal fee**



OUR REQUEST

- Decline to certify the EIR Addendum
- **Direct the Division to prepare a Subsequent EIR**
- Decline to certify the EIR Addendum
- Uphold our appeal and refund our appeal fee



OUR REQUEST

- Decline to certify the EIR Addendum
- Direct the Division to prepare a Subsequent EIR
- Direct the Division to perform a compliance review and abate any violations.
- Uphold our appeal and refund our appeal fee



OUR REQUEST

- Decline to certify the EIR Addendum
- Direct the Division to prepare a Subsequent EIR
- Direct the Division to perform a compliance review and abate any violations
- Uphold our appeal and refund our appeal fee



OUR REQUEST

- **Decline to certify the EIR Addendum**
- **Direct the Division to prepare a Subsequent EIR**
- **Direct the Division to perform a compliance review and abate any violations**
- **Uphold our appeal and refund our appeal fee**







Hiking Trail & Oil Traffic Route

Ferndale Lease & E. Fork Santa Paula Creek Trail

Legend

-  Hiking Trail
-  Oil Traffic Route

Google earth

2000 ft

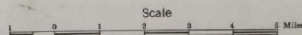


RECREATION MAP

LOS PADRES NATIONAL FOREST

U.S. DEPARTMENT OF AGRICULTURE—FOREST SERVICE
CALIFORNIA

1969



LEGEND

- | | | |
|--|----------------------------------|--------------------------------------|
| Forest Supervisor's Headquarters | Interstate Highway | Poor Dirt Road |
| District Ranger Station | U. S. Highway | Designated Two-wheeled Vehicle Route |
| Forest Service Station | California State Highway | Maintained Trail |
| Registrar Station | County Route | Infrequently Maintained Trail |
| Permanent Lookout Station | Forest Service Route | Primary Condor Observation Point |
| National Forest Boundary | Paved Road | Recreation Site |
| Wilderness or Primitive Area Boundary | Oiled or Graveled Road | Rustic Trail Campsite |
| Controlled Motor Vehicle Use Area Boundary | Dirt Road | Scenic Viewpoint |
| Condor Sanctuary Boundary | Good Road (Surface Unclassified) | Locked Gate |

National Forest Lands open under permit during Fire Season by order of the Regional Forester. Entry permits may be secured from local Forest Service Registrar Stations

National Forest Lands within which public entry is restricted during Fire Season by order of the Regional Forester

NOTICE — Motor Vehicle travel in certain areas of the Forest is restricted to public roads and trails posted for vehicular use. Consult the District Ranger for specific information.



FOREST SERVICE
W. B. OVERLEY, FORESTER

SANTA BARBARA NATIONAL FOREST

(EXCEPT THE MONTEREY DIVISION)

CALIFORNIA

MT. DIABLO AND SAN BERNARDINO MERIDIANS

1926

Scale
1 2 3 4 5 Miles

LEGEND

- National Forest Boundary
- Adjacent National Forest Boundary
- Good motor road
- Poor motor road
- Trail
- Railroad
- Supervisor's headquarters
- District Ranger station
- Guard station
- Permanent lookout station
- Triangulation station
- Lookout and triangulation station
- House, cabin, or other building
- Main Motor Highway
- Improved Public Camp

HELP
PREVENT
FIRES
IT PAYS

Coltrell Flat
Beech
Flat
Sycamore
Flat
Parallel
Game Refuge

D

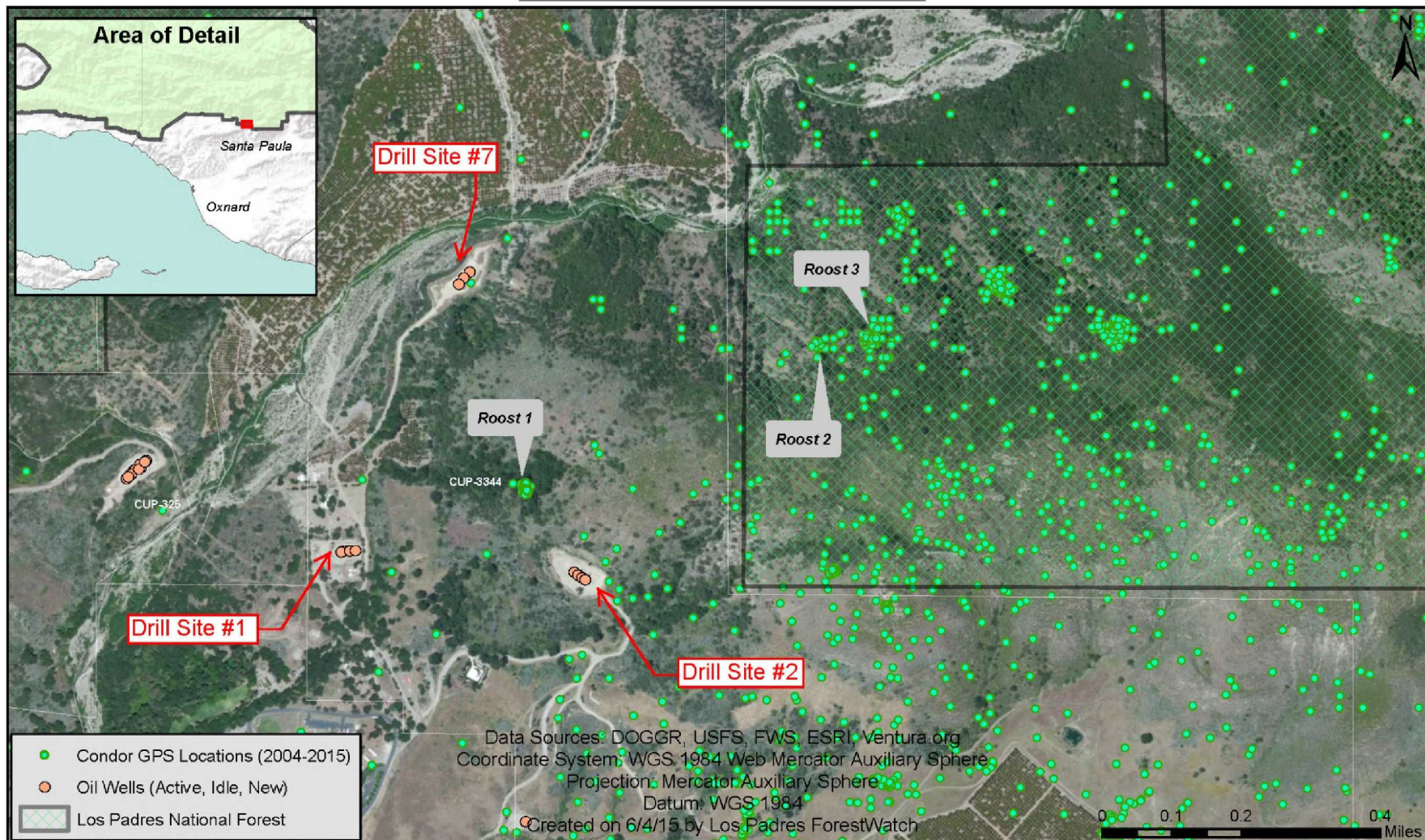


262

449



Condor Activity Near CUP 3344



Roost 1 Data:

37 GPS points, approx. 0.13 miles from nearest oil well

Bird ID: 262

37 points

arrived 17:45 PST on 02-02-2014

departed 09:23 PST on 02-05-2014

Roost 2 Data:

17 GPS points, approx. 0.47 miles from nearest oil well

Bird ID: 262

9 points

arrived 07:33 PST on 12-18-2013

departed 12:04 PST on 12-18-2013

arrived 17:06 PST on 06-01-2014

departed 17:07 PST on 06-01-2014

Bird ID: 449

4 points

arrived 02:00 PST on 04-20-2012

departed 16:00 PST on 04-20-2012

arrived 14:00 PST on 12-18-2013

departed 19:00 PST on 12-18-2013

Roost 3 Data:

88 GPS points, approx. 0.52 miles from nearest oil well

Bird ID: 262

79 points

arrived 22:00 PST on 04-19-2012

departed 16:00 PST on 04-20-2012

arrived 19:20 PST on 02-05-2014

departed 08:59 PST on 02-06-2014

arrived 16:07 PST on 04-16-2014

departed 07:01 PST on 04-17-2014

arrived 17:08 PST on 06-01-2014

departed 17:10 PST on 06-01-2014

Bird ID: 449

7 points

arrived 22:00 PST on 04-19-2012

departed 12:00 PST on 04-20-2012

arrived 01:00 PST on 03-17-2013

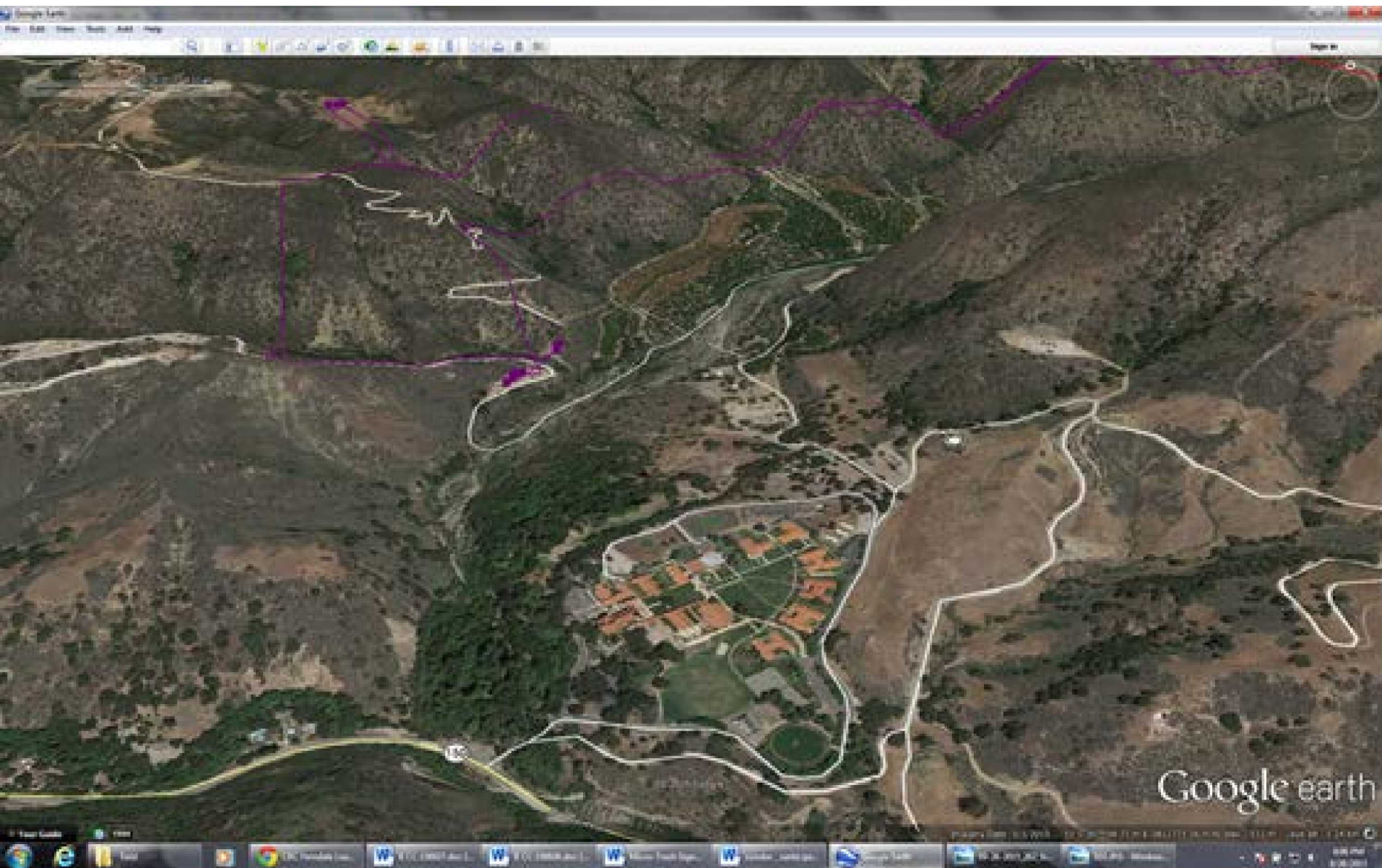
departed 15:00 PST on 03-17-2013

Bird ID: 412

1 point at 21:00 PST on 11-11-2007

Bird ID: 328

1 point at 21:00 PST on 09-08-2008









Pipeline in Santa Paula Creek Floodplain

Data Sources: FEMA, ESRI, USGS, USFS, DOGGR, Ventura.org

Coordinate System: GCS WGS 1984

Datum: WGS 1984

Created by Los Padres ForestWatch on June 8, 2015

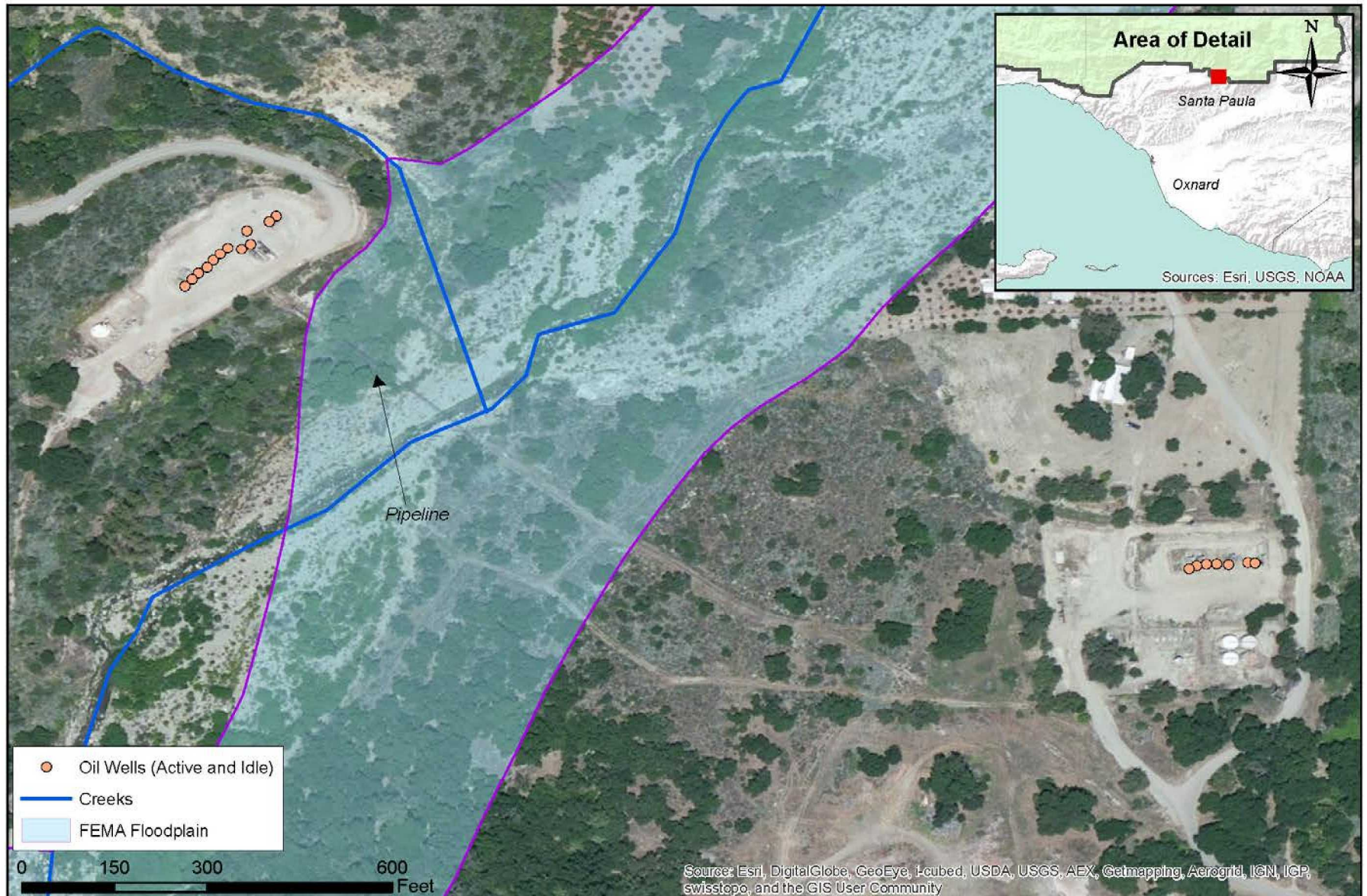


Figure 3: Fracking and Other Well Stimulation Treatments at Ferndale Lease

Well Name	Drill Site	Well Status	Year First Drilled	Years When Well Stimulation Treatments Occurred	Total Number of Well Stimulation Treatments
Barker-Ferndale 1	1	Active	1972	1975, 1975, 1977, 1977	4
Barker-Ferndale 2	1	Plugged	1975	1975, 1975, 1975	3
Barker-Ferndale 3	1	Active	1975	1975, 1978, 2011 (acid)	3
Barker-Ferndale 4	1	Active	1976	1976, 1977, 1978, 1990	4
Barker-Ferndale 5	1	Plugged	1976	1976, 1976, 1989	3
Barker-Ferndale 6	1	Plugged	1977	1977, 1977	2
Ferndale 8	3	Plugged	1980	None reported	0
Valex-Ferndale 107	1	Active	1981	2012	1
Valex-Ferndale 209	2	Plugged	1981	1982	1
Valex-Ferndale 110	1	Active	1982	1982, 1982	2
Valex-Ferndale 211	2	Active	1982	1982, 1982, 1982, 1983	4
Valex-Ferndale 214	2	Active	1982	1982	1
Valex-Ferndale 215	2	Active	1982	1983, 1983	2
Valex-Ferndale 313	3	Plugged	1984	1985, 1985	2
Ferndale 712	7	Idle	1989	1990, 1990	2
Ferndale 716	7	Active	1990	1990, 1990, 1990, 1990, 1990	5
Ferndale 717	7	Active	1990	1990, 1990, 1990	3
TOTAL					42

Source: California Division of Oil, Gas & Geothermal Resources



OUR REQUEST

- Decline to certify the EIR Addendum
- Direct the Division to prepare a Subsequent EIR
- Direct the Division to perform a compliance review and abate any violations.
- Uphold our appeal and refund our appeal fee



OUR REQUEST

- Decline to certify the EIR Addendum
- Direct the Division to prepare a Subsequent EIR
- Direct the Division to perform a compliance review and abate any violations.
- Uphold our appeal and refund our appeal fee



Appeal of PL13-0150

CRC OIL & GAS PROJECT

**Presentation to the
Ventura County Board of Supervisors
October 20, 2015**

